

# ILEX

## Embedded Systems

### Do you need development support in the field of embedded software and systems?

We put our know-how and expertise at your disposal, offering you innovative and creative solutions. Thanks to Ilex, you can move successfully from product definition to production!

## WHAT WE OFFER

### Innovation



We are committed to finding innovative solutions to meet your needs. In this context, various technologies are creatively applied such as IoT, firmware remote update (FOTA), bootloader customization, power reduction and AI.

### Requirements management and risk management



We can help you to define and monitor requirements, while identifying and mitigating risks.

### Development and Verification



We develop your embedded software from definition to production.

During software development, we respect your process and the standards applicable to your product.

### Hardware Verification



We put our hardware expertise at your service by verifying electronic schematics and PCB. The aim is to catch errors early and ensure a reliable design.

 Ilex Embedded Systems SARL  
30 Rue François Spoerry - KM0  
68100 Mulhouse, France

Scan me



 <https://www.ilexEmbeddedSystems.fr>

 [Info@ilexEmbeddedSystems.fr](mailto:Info@ilexEmbeddedSystems.fr)

 +33 (0)6 43 64 58 92

# REALIZATIONS

We are expert in the sectors **Medical, Multimedia, Automotive, Rail, Defense** and put this experience to work for you.

## Some examples:

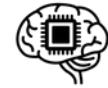
### Dental prophylaxis device



Development of a dental prophylaxis device. (definition, architecture, detailed design, product verification and implementation, compliant documentation, quality system and IEC62304 standard).  
A diagnosis configuration tool was created for the production and after-sales departments.



### Active brain implant



Creation of communication protocol verification software and production of a test bench. (Bed of nails)

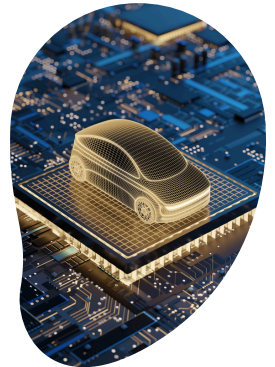


### Telecommunications

Integration of modules in a software stack.  
Implementation methods: iterative and bi-weekly.

### Autonomous driving

Development and integration of motion control software for autonomous driving on embedded hardware.



### Railway

Improvement of a relay system to control and protect DC cells and contact lines. Code review and implementation of corrections.



### MultiMedia

Development of a Set-top box (MPEG2), a DVD subtitle library and driver software for graphics and audio .

